

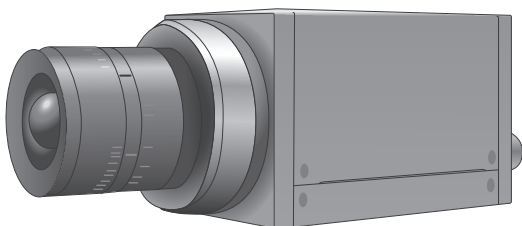
Digital high speed camera

HAS-U1 / HAS-U2

Hardware settings user manual

This manual provides safety and installation instructions.

Please read this manual thoroughly before using.



Important safety instructions 3

List of included items 4

Parts names 5

Setting up procedures 6

Connecting to optional accessories 9

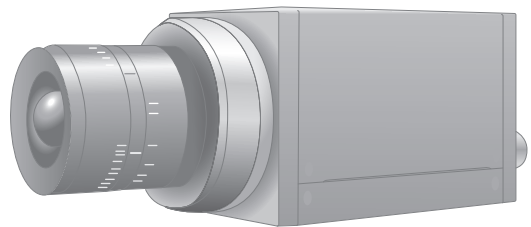
Using USB3.0 hub 10

Product specifications 11

Support information 11

Table of contents

Important safety instructions	3
List of included items	4
Parts names	5
Setting up procedures	6
Connecting to optional accessories	9
Using USB3.0 hub	10
Product specifications	11
Support information	11



— Introduction —

Thank you very much for your purchase.

Please read this manual thoroughly before installation and operation, and keep this manual for future reference.

— Important safety instructions —

⚠ Caution for safety

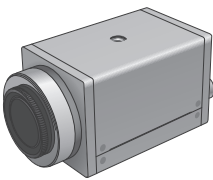
- Do not handle plug or appliance with wet hands.
- Do not plug or unplug the cable when the camera is turned on.
- If your device needs repair, please contact our technical support center.
- Do not disassemble or modify HAS-U1 • HAS-U2.

This device complies with part 15 of the FCC Rules. Operation is subject to the following two conditions: (1) this device may not cause harmful interference, and (2) this device must accept any interference received, including interference that may cause undesired operation.

List of included items

- 1 Camera body
- 2 USB3.0 cable
- 3 Sync master cable*
- 4 Trigger button*
- 5 USB3.0 hub*
- 6 Software CD
- 7 Branch connector*
- 8 BNC cable*
- 9 External sync cable*
- 10 High brightness LED strobe*
- 11 Sync trigger cable for U1 and U2*

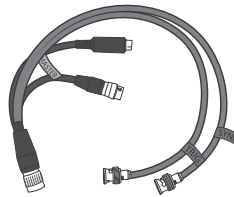
* = optional accessory



1 Camera body



2 USB3.0 cable



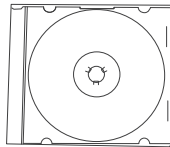
3 Sync master cable*
(FST-SYNC-MST-1)



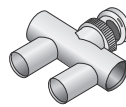
4 Trigger button*



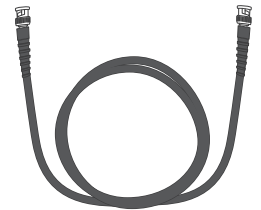
5 USB3.0 hub*



6 Software CD



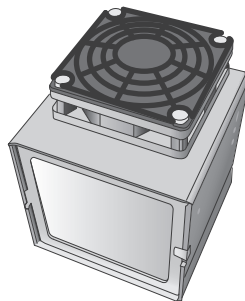
7 Branch connector*



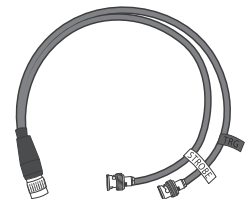
8 BNC cable*



9 External sync cable*
(MD8S-BNCx2)



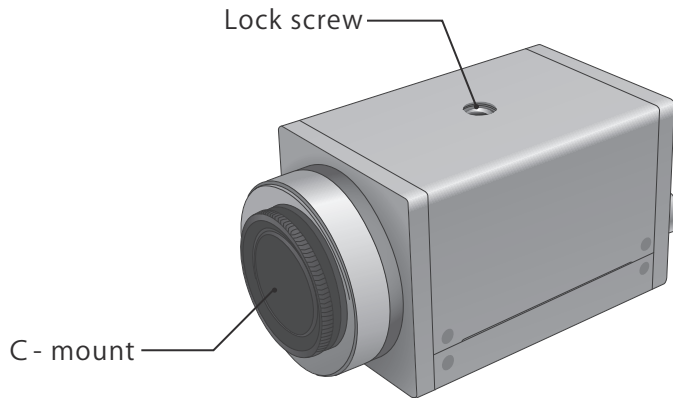
10 High brightness
LED strobe*



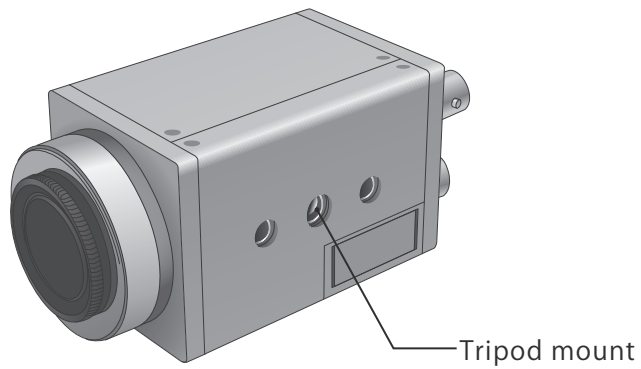
11 Sync trigger cable for
U1 and U2*

Parts names

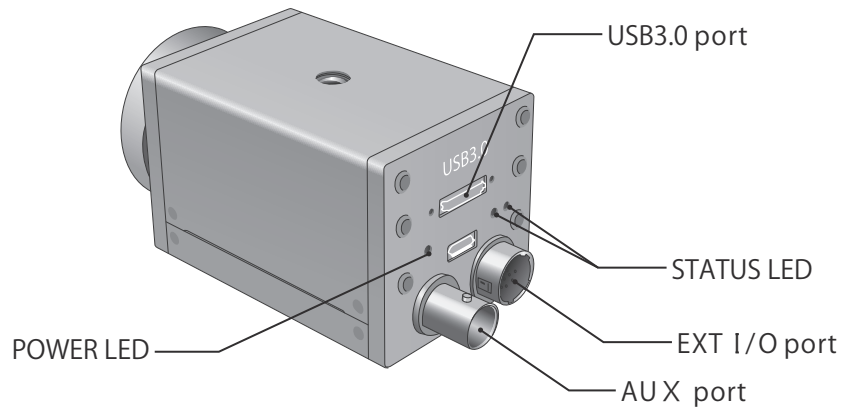
1 Top and Front



2 Bottom



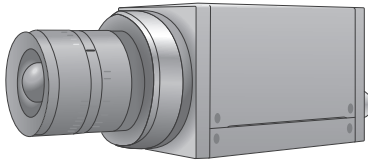
3 Rear



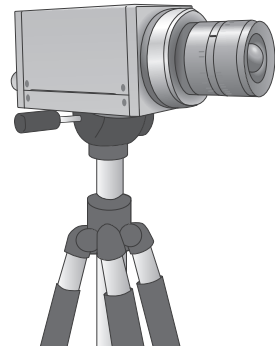
Setting up procedures

How to connect camera directly to your PC.

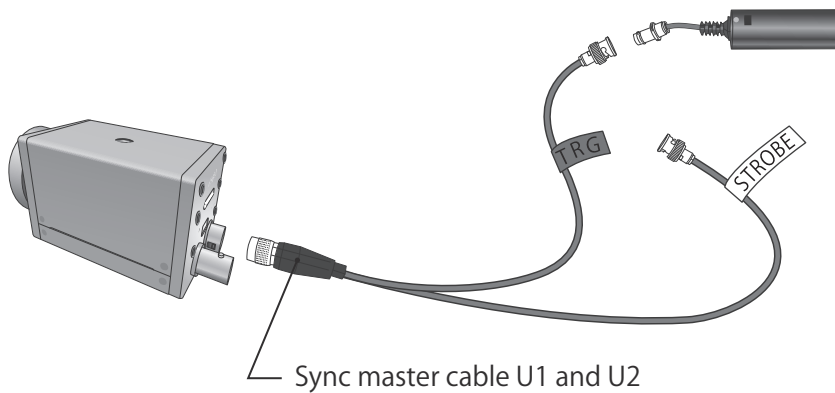
- ① When connecting the camera to a PC directly, please attach C-mount lens and remove the lens cover.



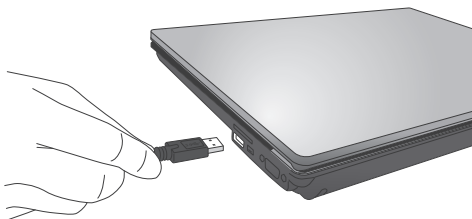
- ② Make sure that the camera is firmly attached to a tripod.



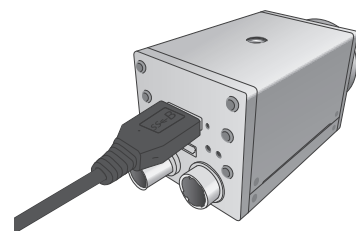
- ③ When it is necessary to use an external trigger and / or to synchronize with LED lights, please use a sync trigger cable for U1 and U2.



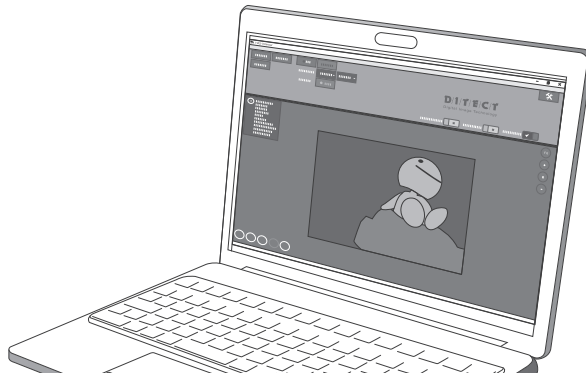
- ④ Connect USB3.0 cable (Standard-A) to your PC.



- ⑤ Connect USB3.0 cable (microB) to the camera.

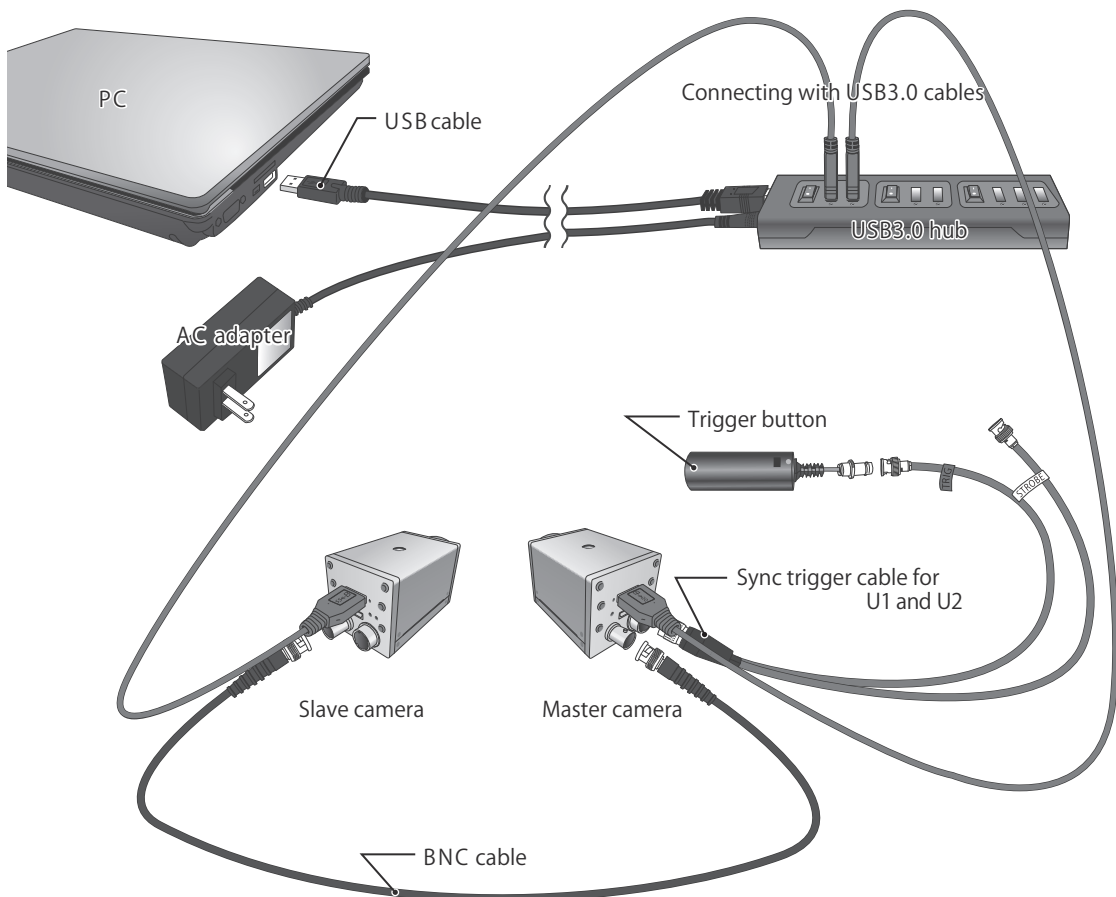


- ⑥ Run the installed application.
※For further assistance please read the software manual.



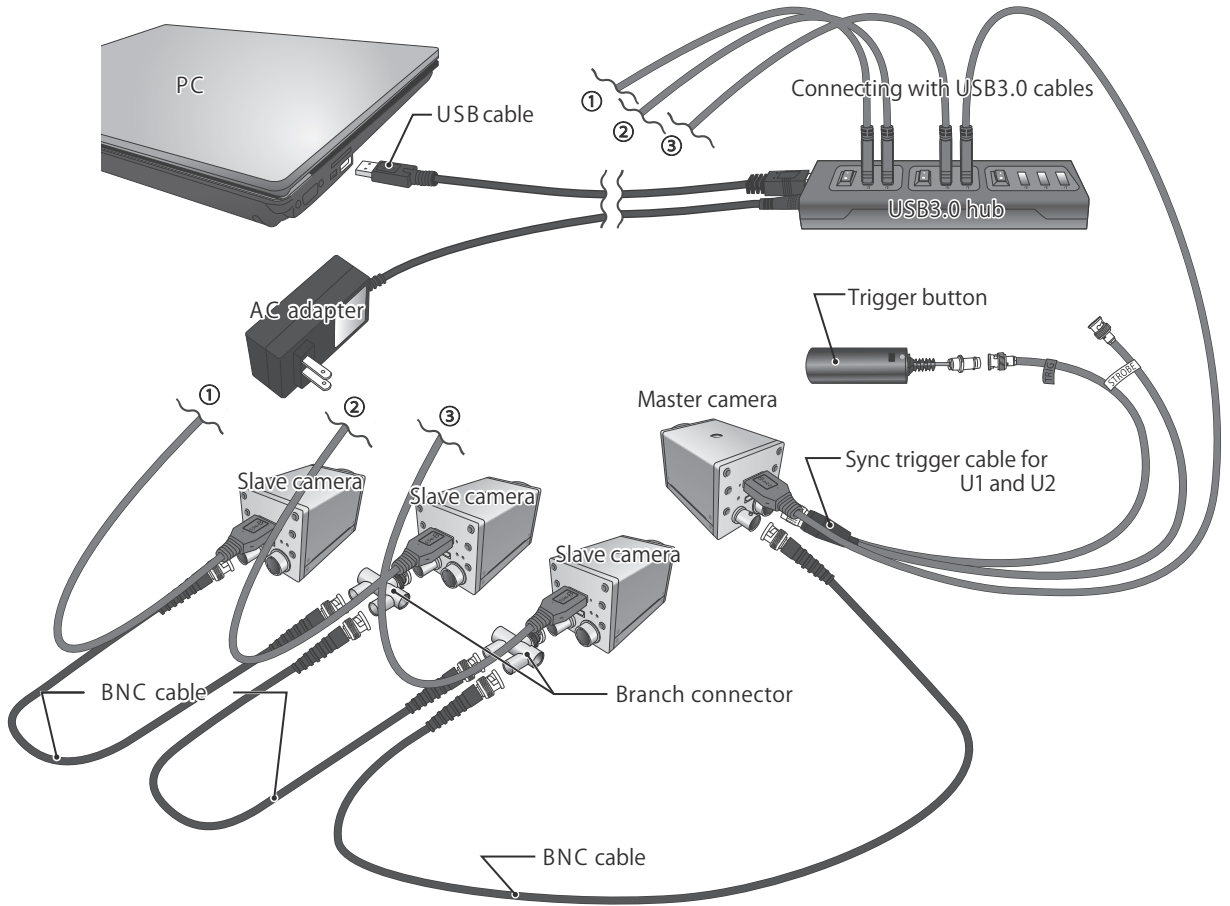
Connecting with multiple cameras.

※ Example of two-camera setup.

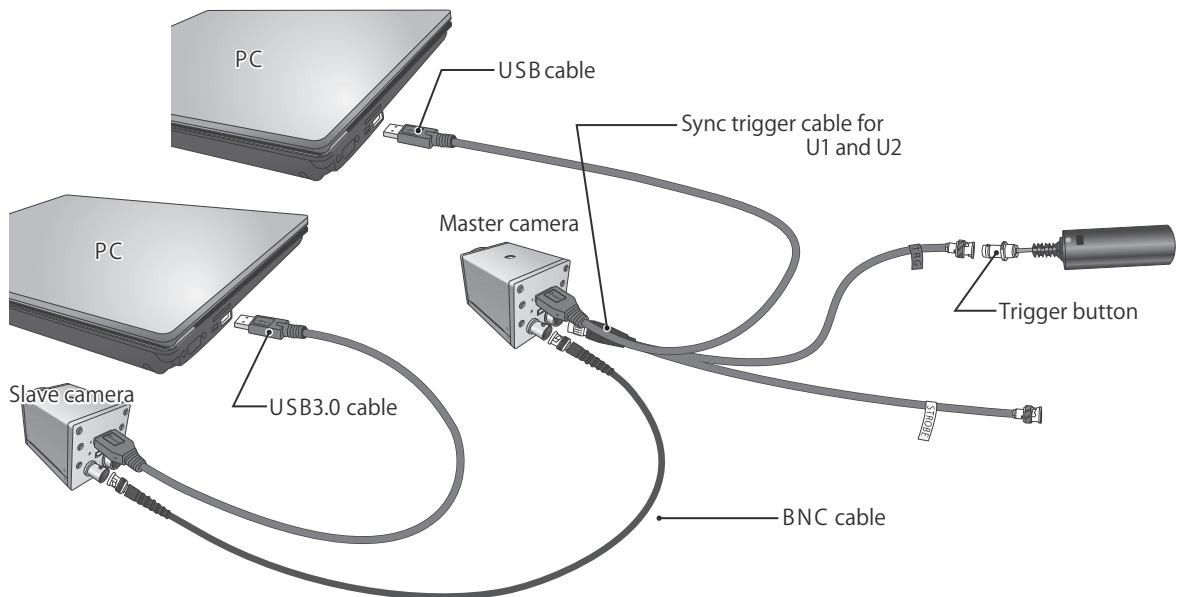


Connecting with multiple cameras.

※ Example of four-camera setup.

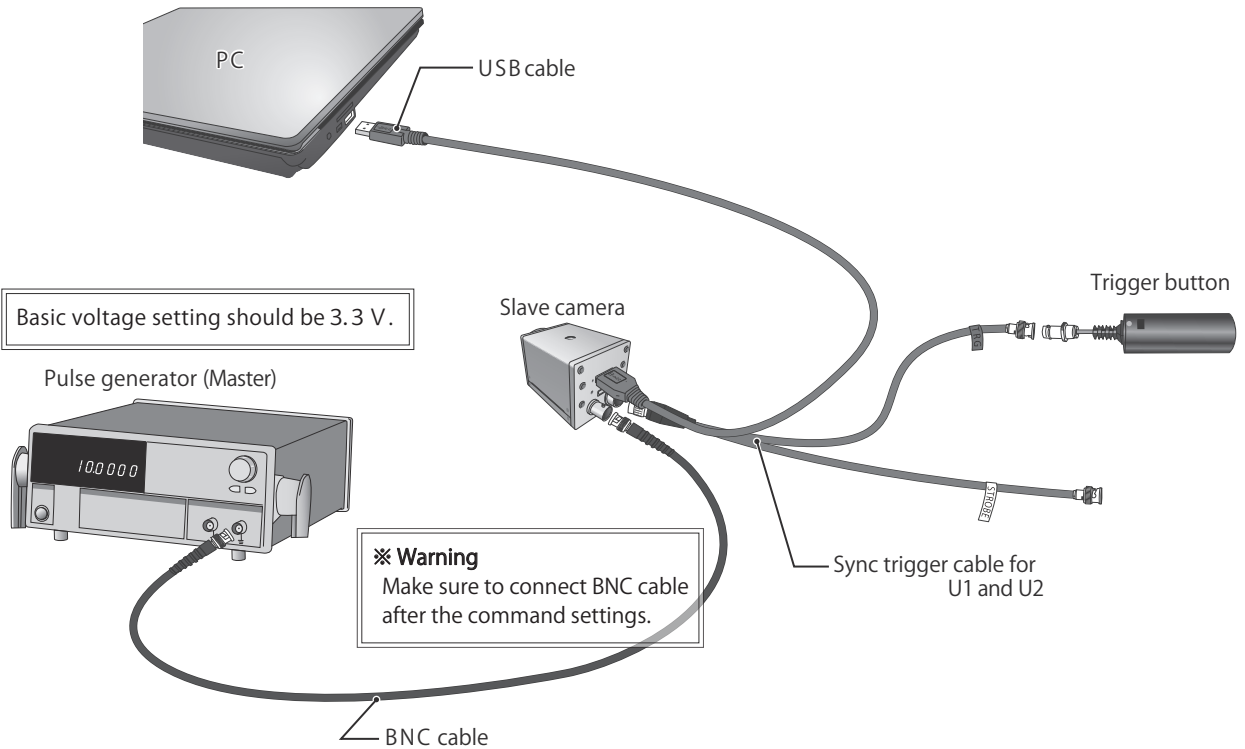


Connecting a camera to a PC × 2 pairs.

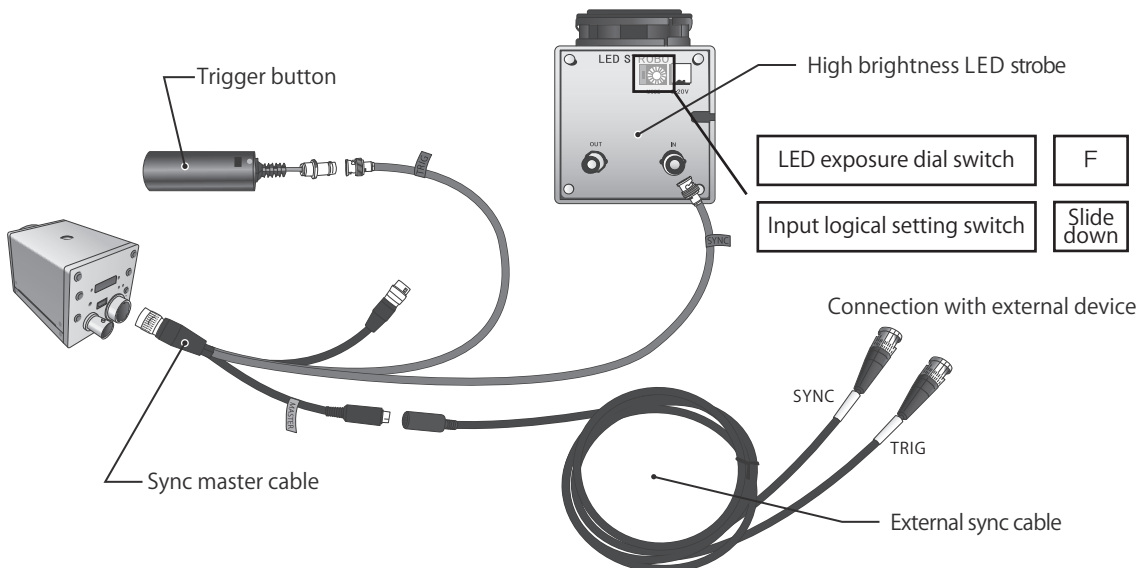


Using external device as the master.

Example : How to record at the frequency of a pulse generator.



Connecting with optional accessories.



Using USB3.0 hub

⚠ Caution!

When using USB3.0 hub, be sure to follow the instructions below. Otherwise, it may lead to problems with the camera or USB3.0 hub.

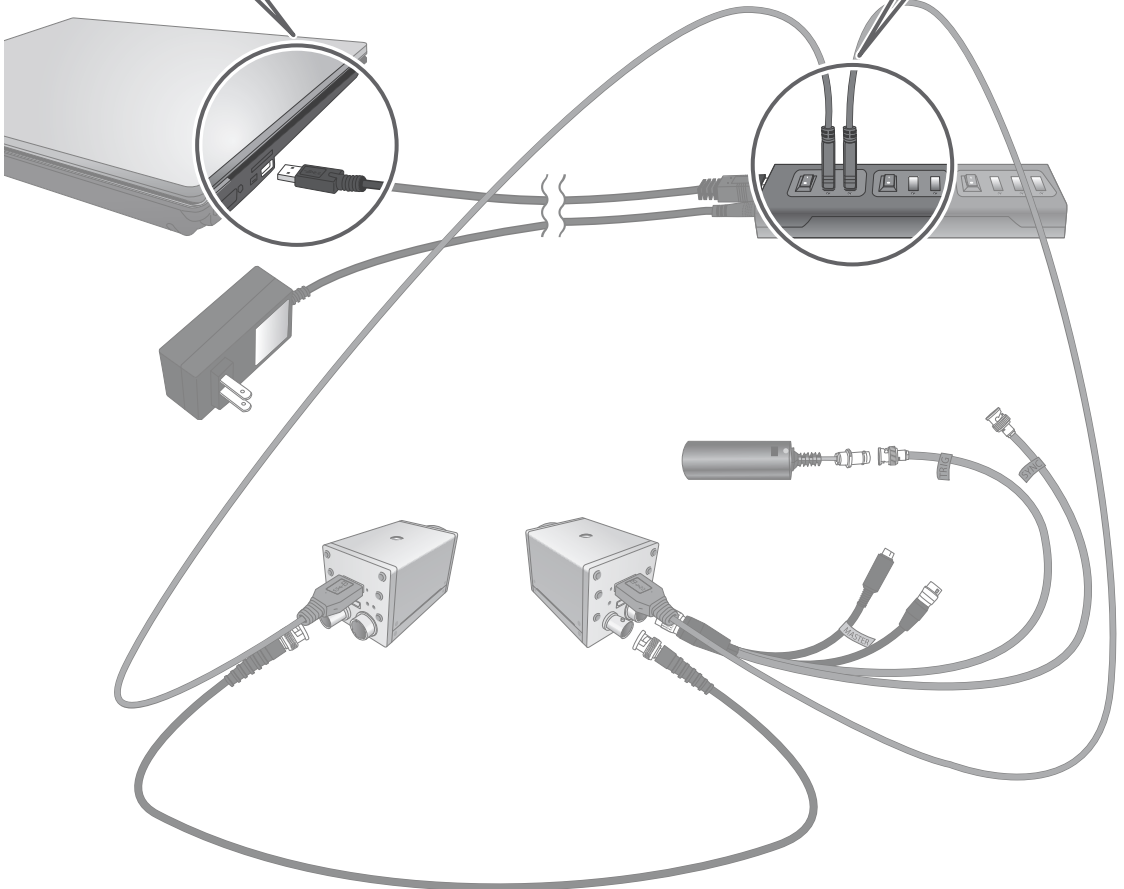
- ① Remove all the cameras connected to USB3.0 hub.
- ② Remove USB3.0 hub from your PC.

②

Remove the USB cable from your PC.

①

Remove the USB cable or turn the switch off.



Product specifications

HAS-U1

Camera	
Camera type	Mono (HAS-U1M) Color (HAS-U1C)
Sensor	CMOS
A/D	10bit
Effective resolution	1280 x 1024 (1.3M pixel)
Sensor format	1/2 inch
Lens mount	C
Recording mode	Embedded memory / DMA transfer
Memory size	2GB
Data output	USB3.0
Interface	Micro-B
Shutter (exposure)	Minimum 1/100,000sec (10 μS)
Sensitivity	7.7V/lux,s
Power supply	USB bus power 12 pin
Electric requirement	Under 4.5W
Weight	Approx. 210g
Size	44mm×44mm×81.5mm

HAS-U2

Camera	
Camera type	Mono (HAS-U2M) Color (HAS-U2C)
Sensor	CMOS
A/D	10bit
Effective resolution	2592x2048 (5.3 M pixel)
Sensor format	1 inch
Lens mount	C
Recording mode	Embedded memory / DMA transfer
Memory size	2GB
Data output	USB3.0
Interface	Micro-B
Shutter (exposure)	Minimum 1/100,000sec (10 μS)
Sensitivity	7.5V/lux,s
Power supply	USB bus power 12 pin
Electric requirement	Under 4.5W
Weight	Approx. 210g
Size	44mm×44mm×81.5mm

Support information

Please contact our local office for software updates and customized options as well as other inquiries.

D|I|T|E|C|T
Digital Image Technology

DITECT corporation

150-0036

1-8 Nampoedai cho, Shibuya ku, Tokyo 150-0036, Japan

TEL : +81-3-5457-1212

E-mail: support@ditect.co.jp

URL : <https://www.ditect.co.jp/>

Digital high speed camera

HAS-U1 / HAS-U2

Hardware settings user manual Rev1.0.4

D/I/T/E/C/T
Digital Image Technology